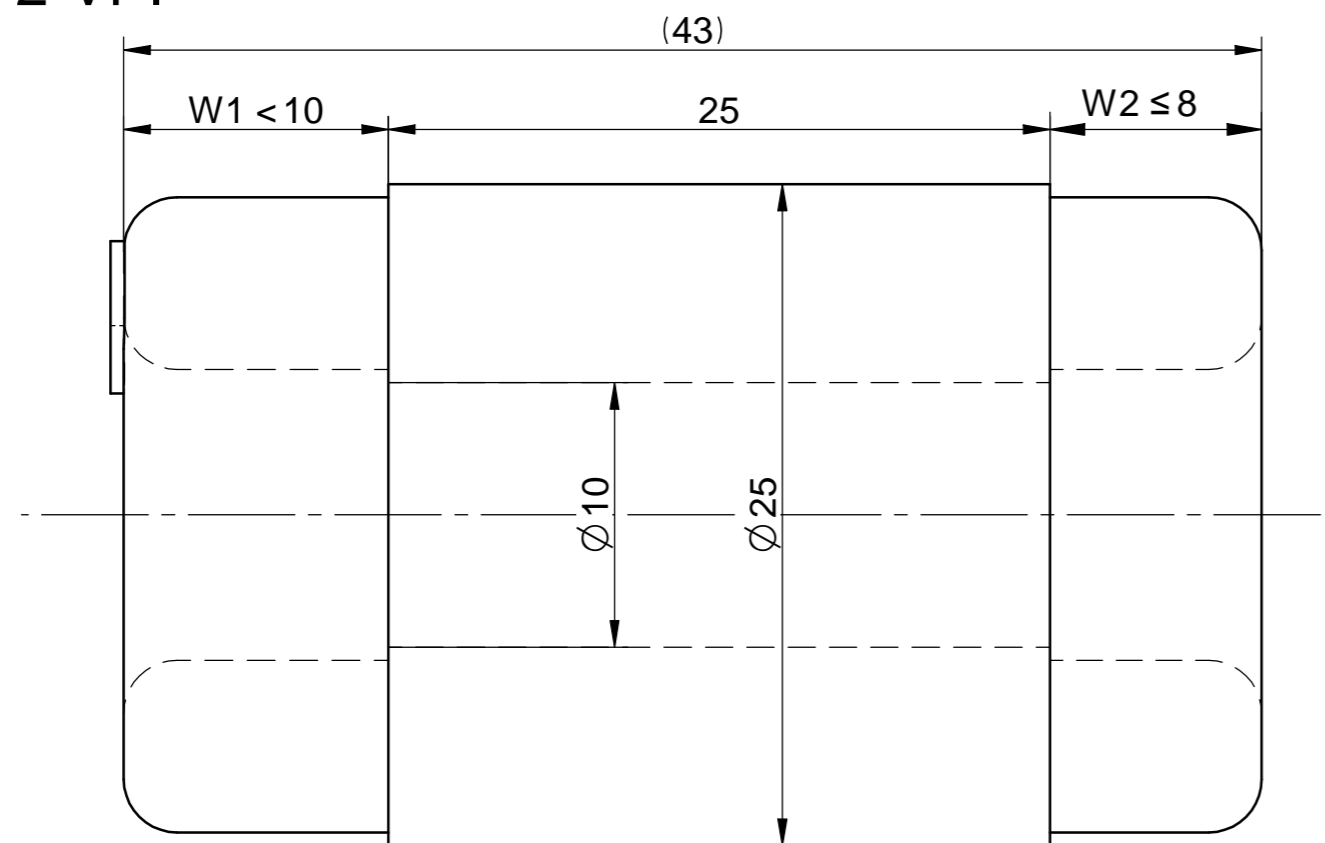


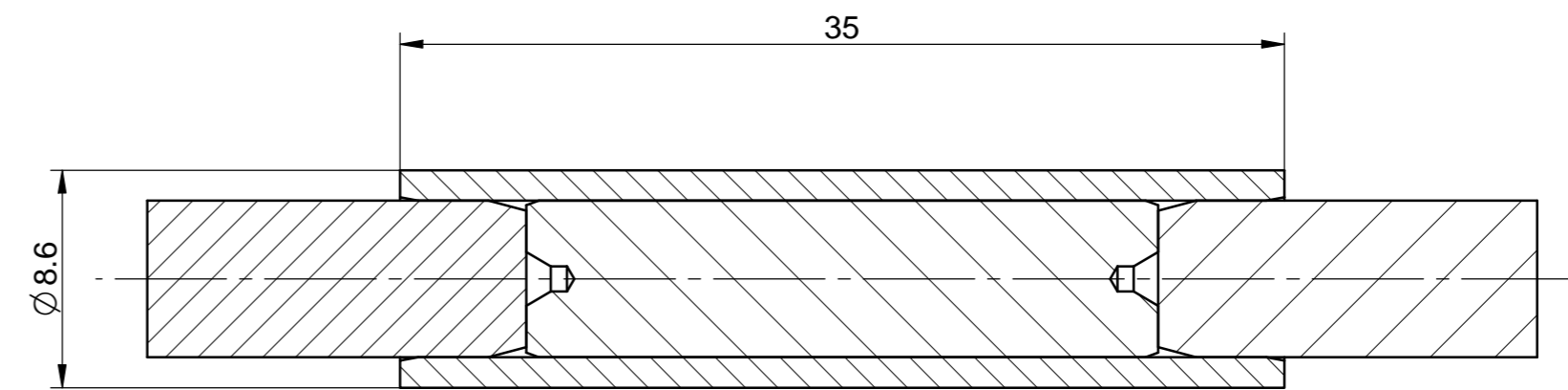
Rotors & Stators for Turbo-Compressors and Generators

1.3 kW 500,000 RPM

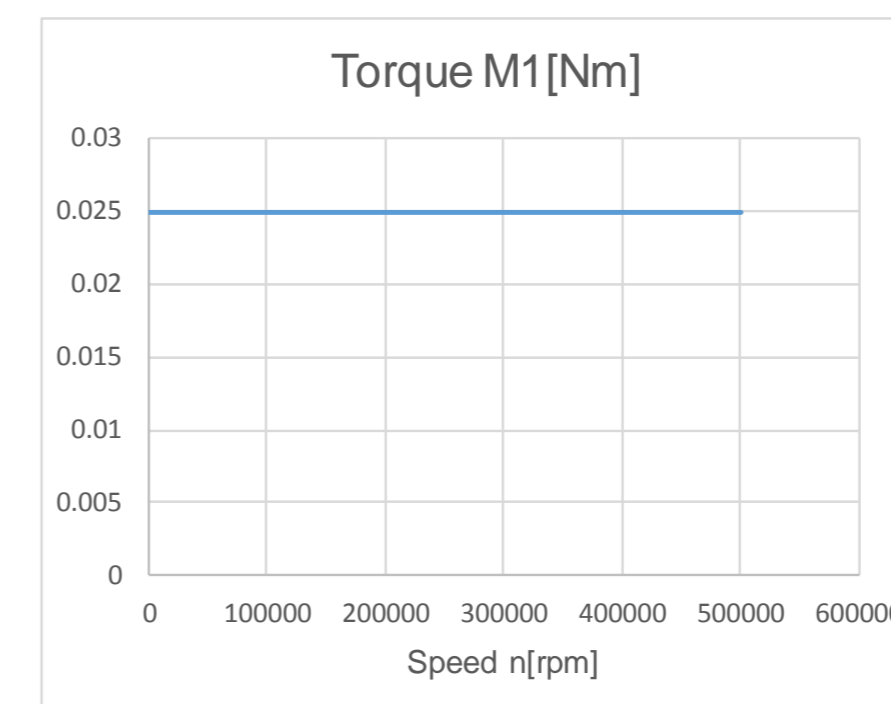
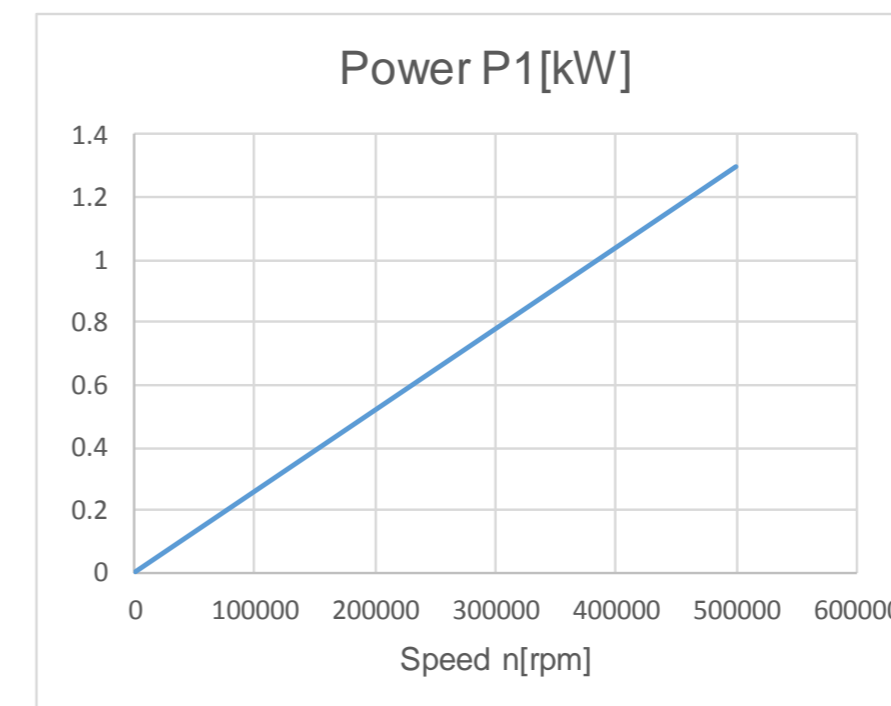
mSpW 2.5/2.5-2-VPI



dimensions in mm



S1 Continuous Power & Torque



Specifications			
Speed	n	500,000	rpm
Frequency	f1	8,333	Hz
Power	P1	1.3	kW
Voltage	U1	290	Vrms
Current	I1	2.7	Arms

Notes:

- 2-pole stator with PM-rotor shaft
- VPI end windings support:
 - refrigerant cooling (compatible with R134a and R245)
 - air cooling
 - liquid cooling with water jacket
- Efficiency with sinusoidal current supply > 92%
- H-class insulation system for winding temperatures up to 180°C (356°F)
- cable outlet configuration: customer specified
- PM-rotor with magnet inside shaft, retained by a steel sleeve
- shaft ends: customer specified
- maximum structural rotor speed Nmax = 550,000 RPM
- suitable for motor and/or generator applications

