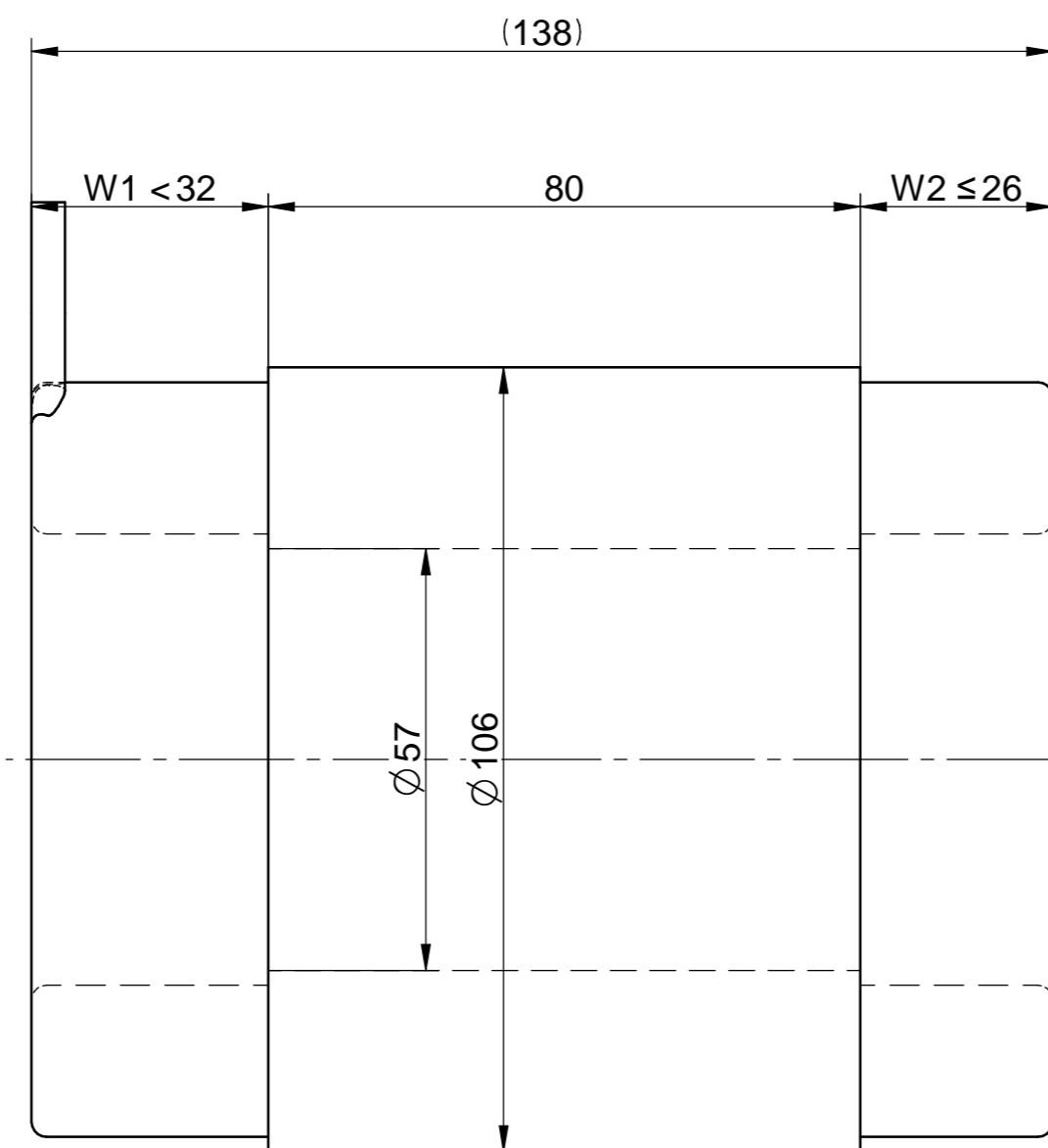
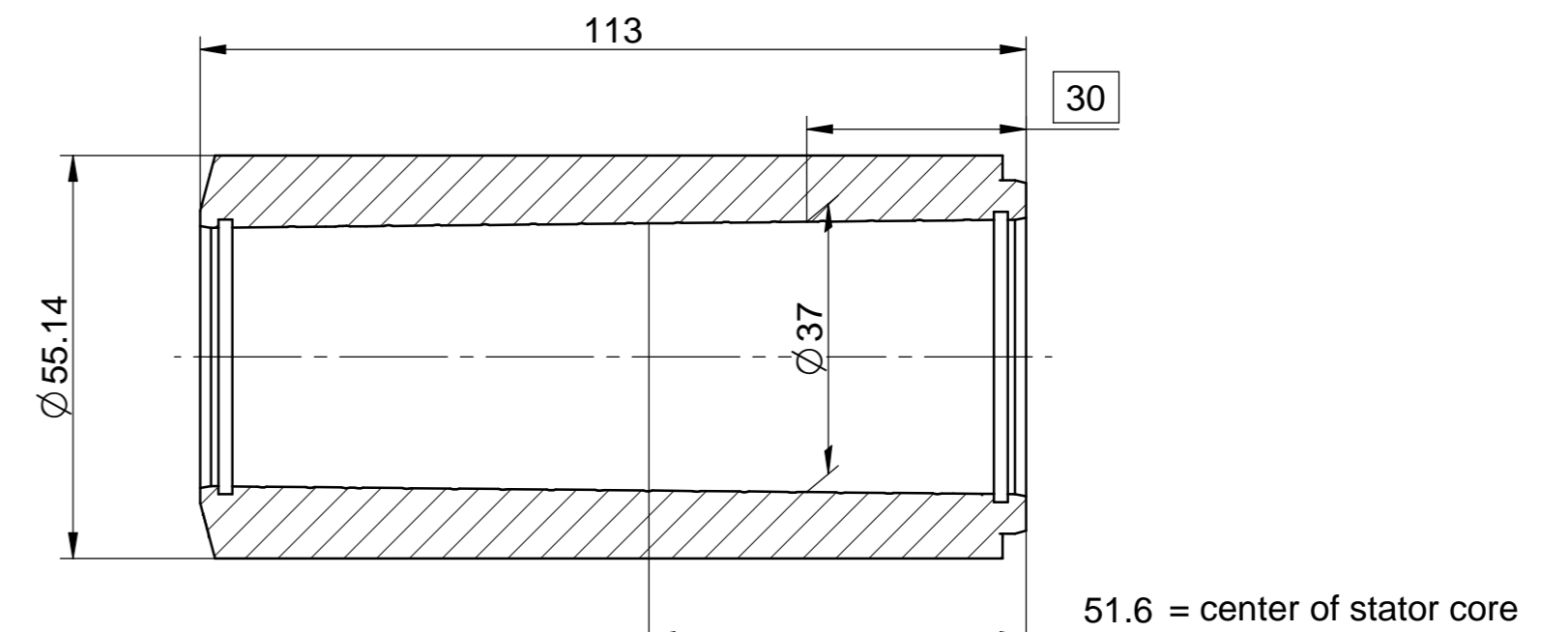


Rotors & Stators for Turbo-Compressors and Generators

33 kW 90,000 RPM
mSpRF 10.6/8-2 VPI

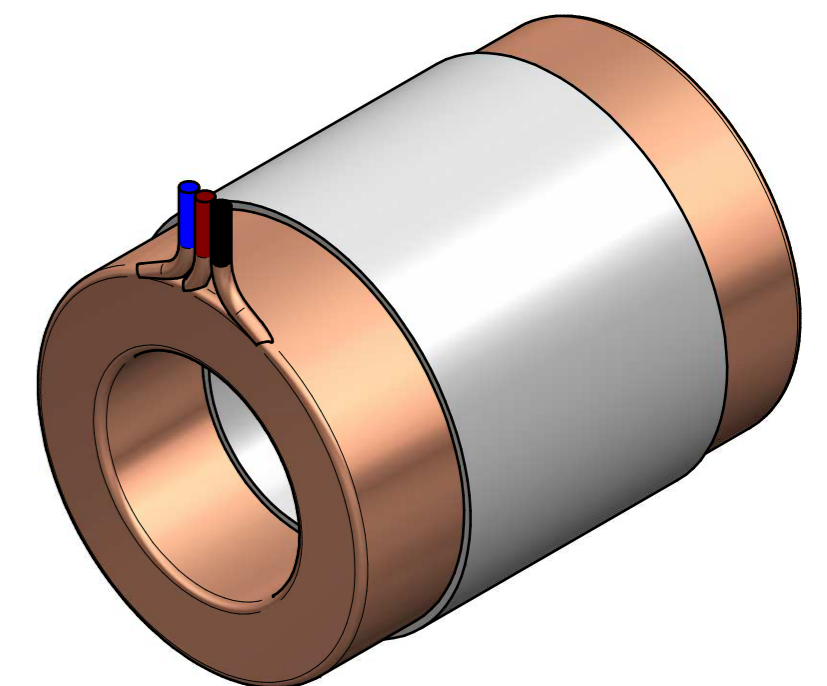
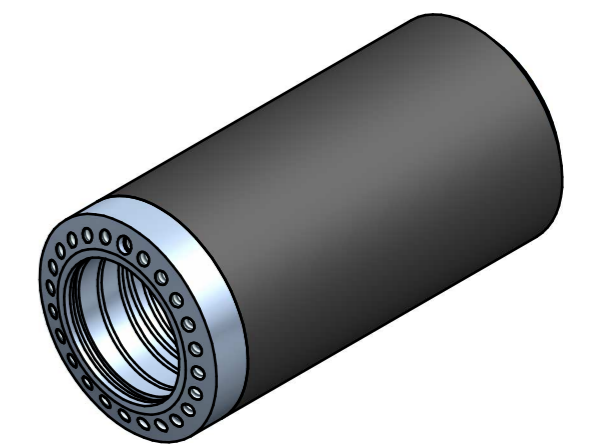
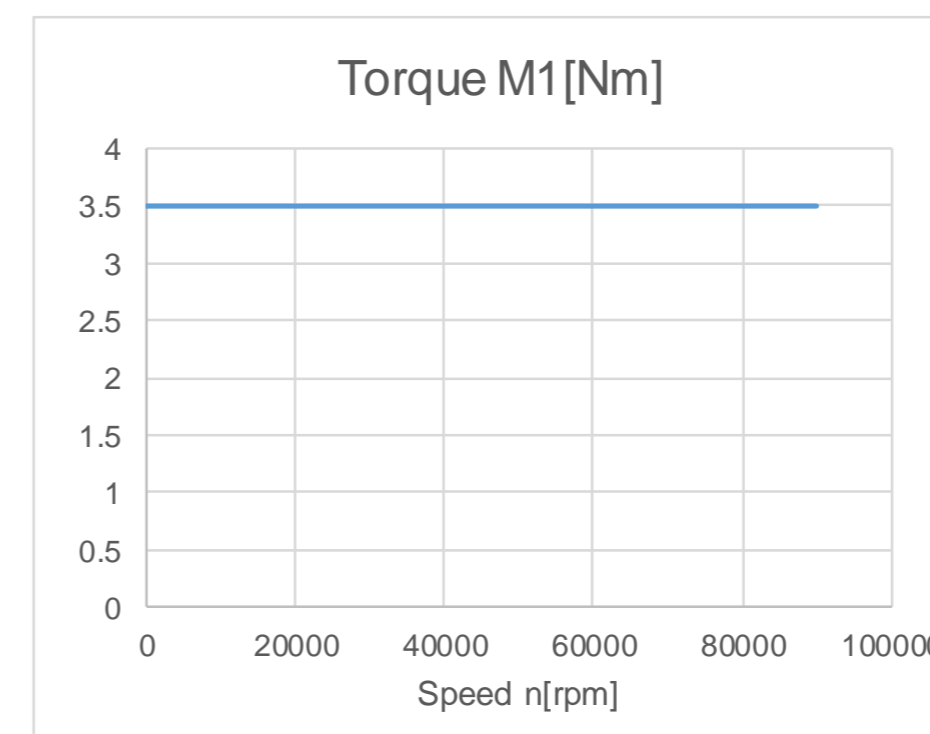
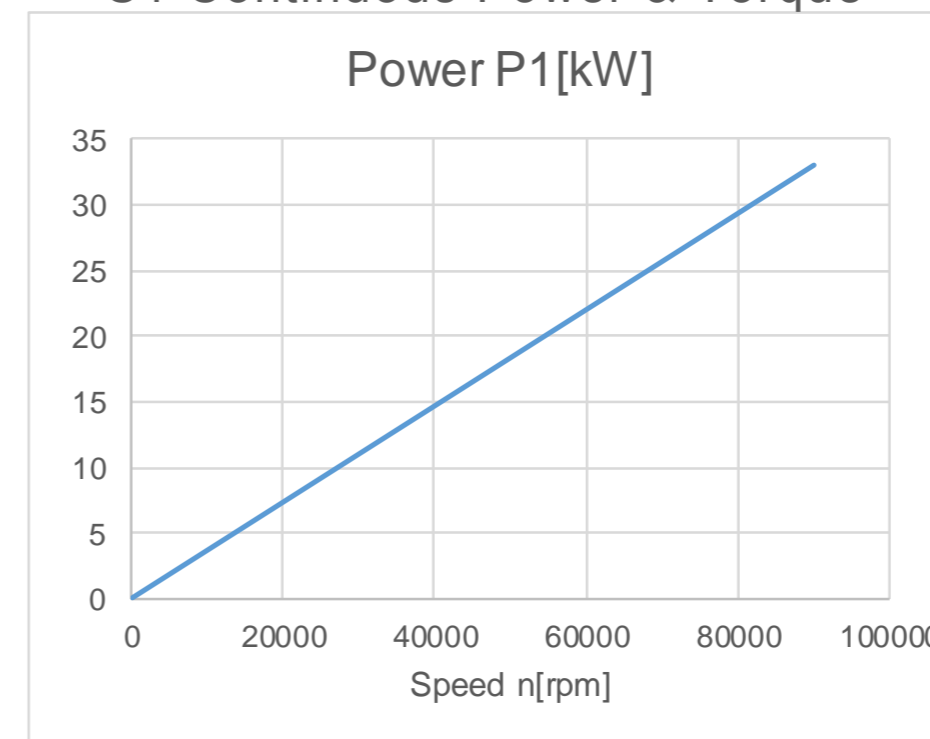


dimensions in mm



Specifications				
Speed	n	90,000		rpm
Frequency	f1	1,500		Hz
Power	P1	33		kW
Voltage	U1	380		Vrms
Current	I1	57		Arms

S1 Continuous Power & Torque



Notes:

- 2-pole stator & PM-rotor set
- VPI windings for refrigerant cooling (compatible with R134a and R245)
- Optional ALKA version & cooling jacket for effective liquid cooling
- Efficiency with sinusoidal current supply > 96%
- H-class insulation system for winding temperatures up to 180°C (356°F)
- type and number of temperature probes: customer specified
- cable outlet configuration: customer specified
- PM rotor with tapered ID and carbon fiber retaining sleeve
- rotor mounted by pushing onto tapered shaft (no heat required)
- maximum structural speed: Nmax = 96,000 RPM
- suitable for motor and generator applications