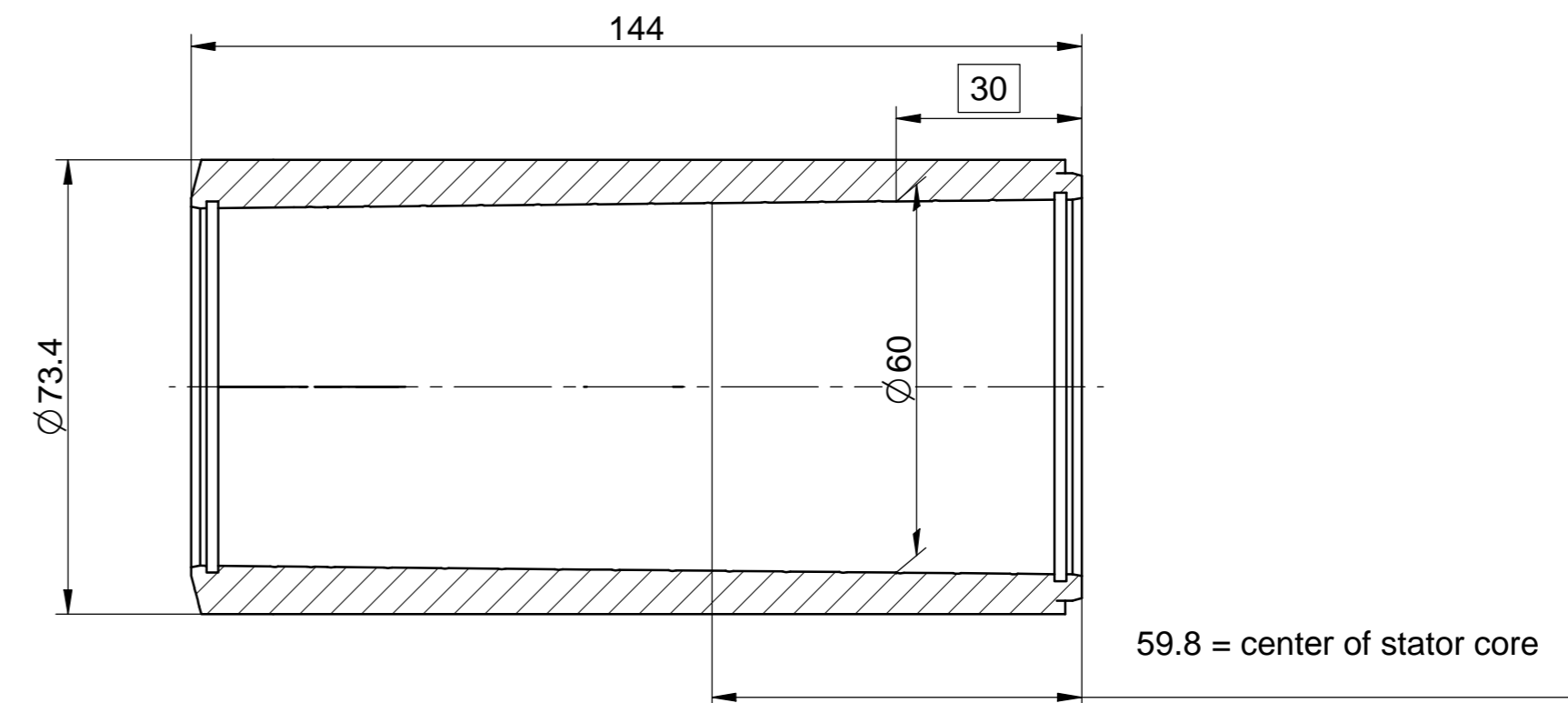
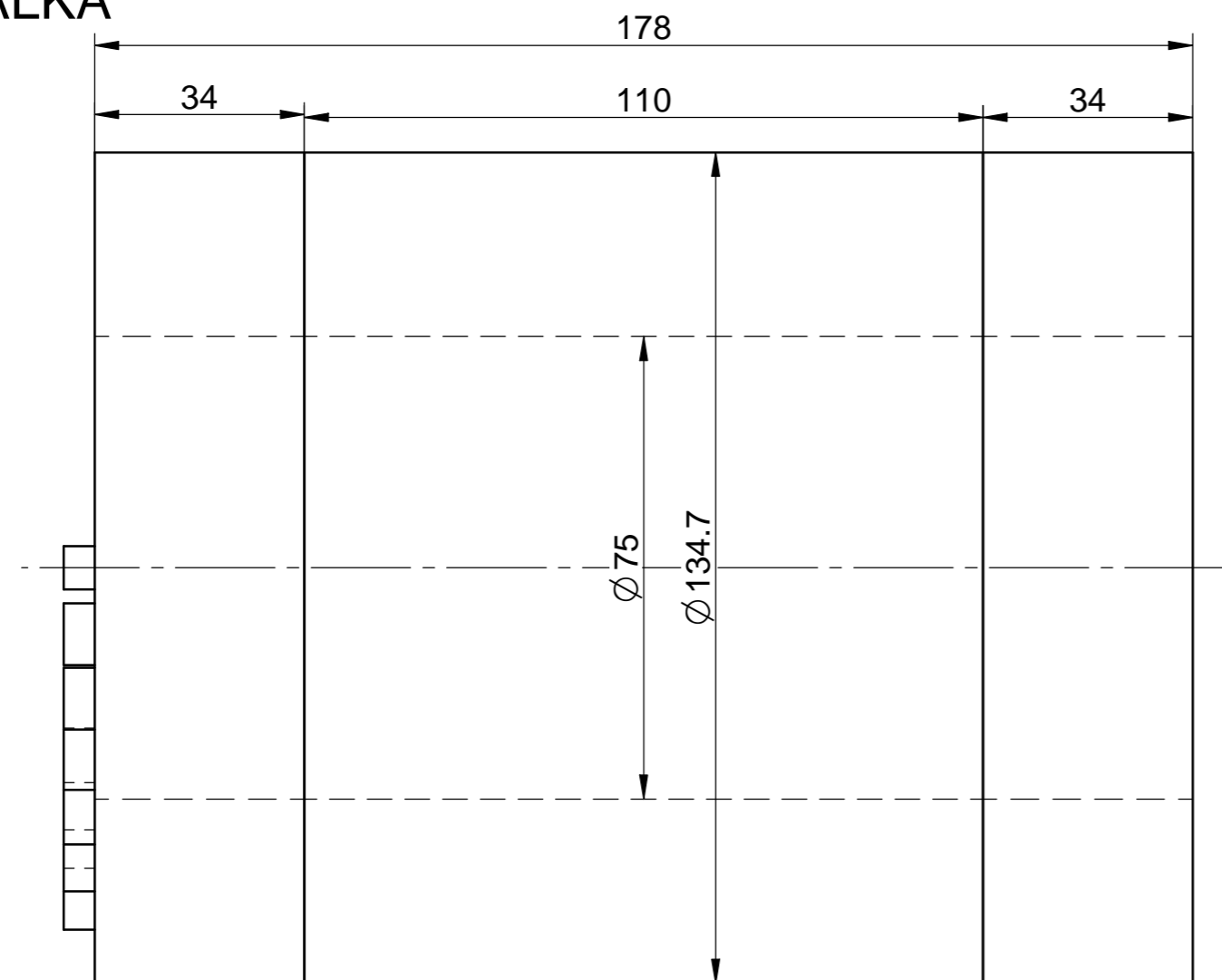


Rotors & Stators for Turbo-Compressors and Generators

120 kW 60,000 RPM

mSpW 13.5/11-4-ALKA



dimensions in mm

Specifications				
Speed	n	60,000		rpm
Frequency	f1	2,000		Hz
Power	P1	120		kW
Voltage	U1	440		Vrms
Current	I1	188		Arms

Notes:

- 4-pole stator and PM rotor set
- ALKA version with optional cooling jacket for effective liquid cooling
- Optional VPI windings for refrigerant cooling (compatible with R134a and R245)
- Efficiency with sinusoidal current supply > 96%
- H-class insulation system for winding temperatures up to 180°C (356°F)
- type and number of temperature probes: customer specified
- cable outlet configuration: customer specified
- PM-rotor with tapered ID and carbon fiber retaining sleeve
- rotor mounting by pushing onto tapered shaft
- maximum structural speed $N_{max} = 66,000$ RPM
- suitable for motor and generator applications

S1 Continuous Power and Torque

